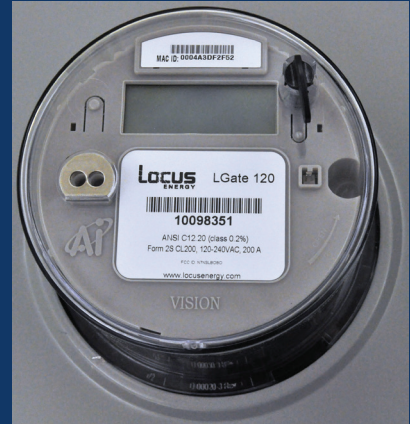


# LGate 120

## RESIDENTIAL SOLAR MONITORING SOLUTION

The LGate 120 is a single-phase electronic watt-hour meter for remote monitoring of solar photovoltaic systems. It features a smart communications module to automatically transmit meter data over cellular or Ethernet networks allowing system owners and operators to easily manage distributed solar assets.



The LGate 120 combines a revenue-grade, solid-state power meter with an advanced communications gateway. These components work in conjunction to remotely monitor the performance of residential solar energy installation regardless of panel or inverter type. The LGate 120 is a one-piece completely under glass meter which installs easily using a standard socket base. Performance data is uploaded in near real-time to the Locus Energy Solar-OS™ monitoring platform which provides a suite of tools and analytics for asset managers.

### DATA COLLECTION

AC energy data is collected by the meter and passed to the communications module. Additional system performance data can be collected directly from meteorological sensors and supported inverters via available RS-485 or Zigbee connections. All data is stored in non-volatile memory and then automatically uploaded to the Solar-OS and SolarNOC platforms.

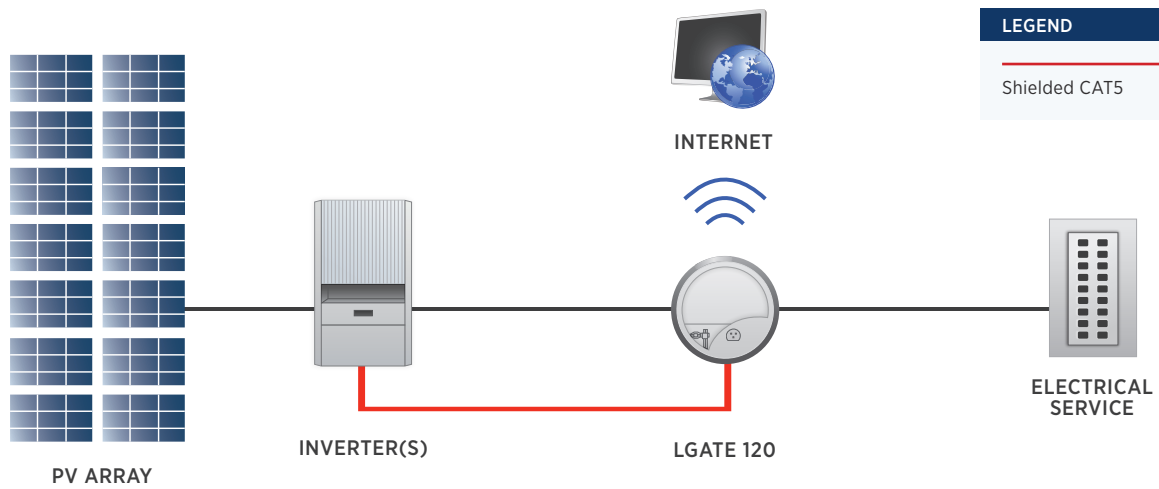
### NETWORK CONNECTIVITY

The communications gateway inside the LGate 120 supports plug and play connectivity through a cellular or available Ethernet network connection. Once the unit is installed and powered on, it will immediately begin transmitting data without any configuration. For maximum reliability, the communications gateway will automatically route uploads between the wireless and wired connections if either of the networks are unavailable.

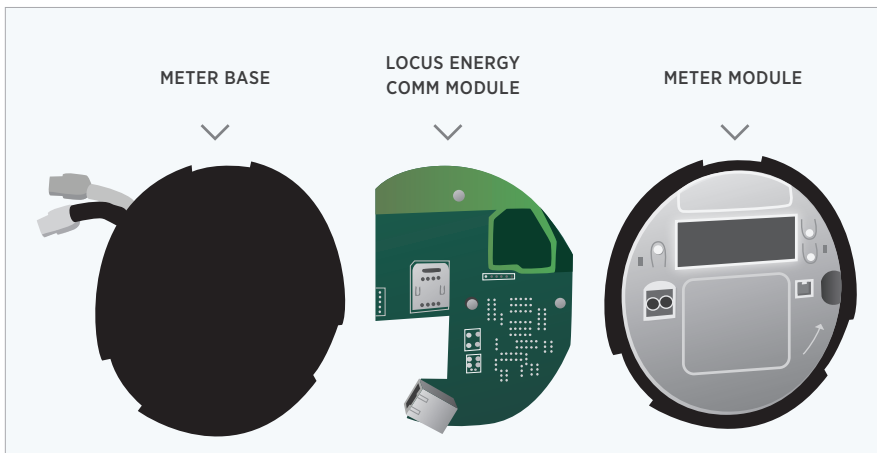
### FEATURES

- ANSI C12.20 power meter
- RS-485 and Zigbee inputs
- GSM cellular or Ethernet connectivity
- Over the air firmware updates
- Easy, low cost installation
- Doesn't require entrance into the building
- Plug and play activation
- LCD display

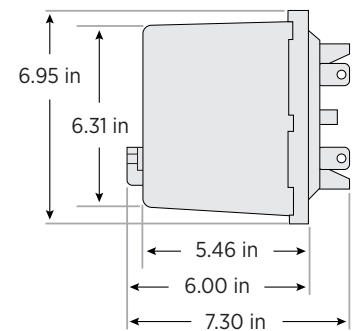
## DIAGRAM - TYPICAL CONFIGURATION



## DIMENSIONS



SOCKET METER



## SPECIFICATIONS

### DATALOGGER

Processor	ARM9 embedded CPU
OS	Custom version of Linux 2.6, OTA firmware updates
Memory	128 MB RAM
Display	LCD screen

### PHYSICAL

Enclosure	NEMA 3R Type
Weight	8 oz
Dimensions	6.95" x 6.5" x 7.3"
Environment	-20 to 60C, all-weather
Warranty	5 year limited warranty

### COMMUNICATION INTERFACE OPTIONS

Model Number	LGate120-3Gx	LGate120-3Gy	LGate120-3Gz
Cellular - 3G GSM	✓	✓	✓
RS-485 2 and 4 wire		✓	
Modbus		✓	
Zigbee			✓
Ethernet RJ-45 10/100, DHCP/Static		✓	

### POWER

Accuracy	ANSI 12.20 (Class 0.2%)
Voltage Inputs	120 - 480 VAC
Max. Current Input	200 A
Service Type	Single phase , 60 Hz
Socket Type	2S

### COMPLIANCE

ANSI 12.20 class 0.2%
FCC Part 15B
PTCRB
AT&T Carrier Compliance